



2025 B.A.S.S. Nation Qualifier

Lake Erie
Monroe, MI
July 16-18, 2025

Takeoffs: 6:30 am Weigh-ins: 2:30 pm

Official Host
Explore Monroe Michigan
Monroe, MI



Tournament Information

TD Contact: GL Compton 864-872-0028

Pre-Tournament Off-Limits

Off-limits will begin on Wednesday, July 3rd and extend until July 12th at safe light. Please review rules on no-information.

Official Practice Days

July 12th to July 15th

All competitors must be off tournament waters at 12:00 noon local time on Tuesday, July 15th

Official Tournament Check-in

July 15th from 2:00 pm to 4:00 pm via time slots.

Check-In Reminder: All anglers must check-in in person with B.A.S.S. staff onsite. This will be the only check-in period. See Rule No. 4

You will be fined for being late.

Check-in Location

TBD

Tournament Briefing

Virtual – All contestants must view.

Tournament Waters

Tournament waters will be Lake Erie and any canals and creeks connecting to Lake Erie. Only water open to all public fishing will be considered tournament waters. Any water closed to public fishing will be closed to this tournament's contestants.

Including Lake St. Clair – See Boundary Map Below

Including Western Lake Erie – See Boundary Map Below

Official Launch

TBD

Fishing Limits

5 fish boaters, 3 fish nonboater – 14 inch min length

Fishing License Requirements

Michigan License required - <https://www.mdnr-elicense.com/Welcome/Default.aspx>.

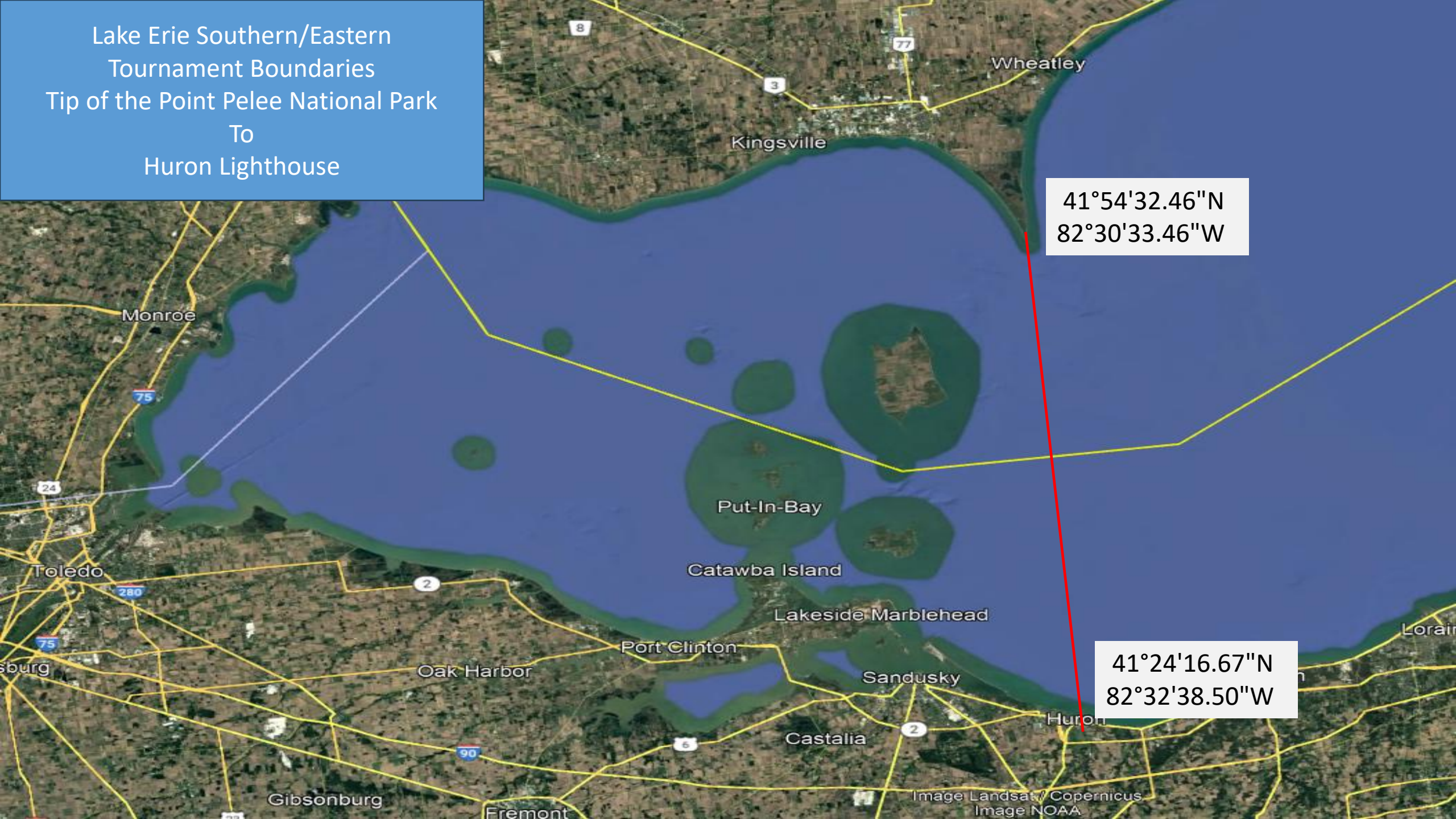
If fishing Ontario waters you must purchase an Outdoors Card and an Ontario Sport Fishing License NOT a conservation license – <https://www.ontario.ca/page/fishing>

If fishing Ohio waters, you must have Ohio License <https://ohiodnr.gov/buy-and-apply/hunting-fishing-boating/fishing-resources/fishing-licenses>

If fishing or traversing through the Walpole Island Territory, you must have a pleasure craft permit and

fishing permit. <https://www.walpoleislandfirstnation.ca/hunting-and-fishing>

Lake Erie Southern/Eastern
Tournament Boundaries
Tip of the Point Pelee National Park
To
Huron Lighthouse



41°54'32.46"N
82°30'33.46"W

41°24'16.67"N
82°32'38.50"W

Lake St. Clair Northern Boundary
Interstate 69 bridge (Blue Water Bridge)



42°59'55.71"N
82°25'30.67"W

42°59'53.53"N
82°25'19.25"W